



JAPAN-AMERICA JOURNAL

The Quarterly Newsletter of the Japan-America Society of Hawaii

Volume 32 • Number 4 • Fall 2013

JASH Hosts Public Symposium on Cultural & Educational Interchange



Mr. Harry Hill, Chair of the U.S. CULCON Panel addresses the gathered guests on the importance of educational interchange at the Public Forum, East-West Center.

“The goodwill of the Japanese people is America’s greatest strategic asset in the Asia-Pacific region.” With these words, Mr. Mark Davidson, Minister-Counselor for Public Affairs at the U.S. Embassy in Tokyo framed the importance of this public symposium. Mr. Davidson identified Youth Engagement and Social Media as one of those strategic pillars. With close cooperation and support from the United States-Japan Conference on Cultural & Educational Interchange (CULCON), JASH held a public symposium on cultural and educational interchange in Hawaii to kick off the new year. Nearly 100 leaders from the community composed of educators, non-profits, think-tanks, and government groups gathered at the iconic I.M. Pei-designed Imin International Conference Center at the East-West Center to hear experts from Japan and the U.S. who had gathered for this occasion.

The symposium was conceived to take advantage of the CULCON Educational Task Force Meeting, held this year in Honolulu. Attending this event were nearly 30 U.S. and Japan experts on education to discuss its annual report, looking for solutions to address the declining interest of Japanese studying in the U.S. and the low U.S. student numbers studying in

Japan. Deputy Assistant Secretary for Public Diplomacy and Public Affairs of the Bureau of East Asian and Pacific Affairs, Department of State, Honorable Susan Stevenson led off the symposium by stating how the U.S. government stresses the

Continued on next page



Deputy Assistant Secretary for Public Diplomacy Susan Stevenson talks about the U.S. strategic imperative promoting educational exchanges as a means to promote mutual understanding.


CULCON...

Continued from previous page

importance of promoting international exchanges, including educational ones. Following Ms. Stevenson's remarks, Mr. Masato Otaka, Minister for Public Affairs, Embassy of Japan in the United States listed the recent problematical trend of decreasing numbers of Japanese studying in the U.S. and what this meant to Japan's future economic viability and security. Mr. Otaka added that the Abe Administration through the Ministry of Education has set goals to double the number of Japanese students studying in the U.S. by 2020. The last presentation was by Mr. Mark Davidson who covered all aspects of the importance of cultural and educational interchange, inspiring all of us to continue with our programs. Notably, Mr. Davidson listed a number of programs JASH has or is conducting to support cultural and educational interchange, focusing on the successful Rainbow for Japan Kids program that brought Japanese children from the disaster region of Japan to Hawaii for rest, recuperation, and physical/psychological relief, awarding of exchange scholarships through the Crown Prince Akihito Scholarship Foundation, and recently assisting three locations in Japan (Nagaoka City, Ehime Prefecture, Shizuoka City) to apply for “Friendship Blossom” dogwood tree planting, a gift from the U.S. to Japan to mark the 100 year anniversary of the gifting of cherry trees to the United States in 1912.



Minister for Public Affairs, Mr. Masato Otaka from the Japanese Embassy in the U.S. addresses the alarming drop in Japanese students studying in the U.S. and how Japanese Government is addressing the issue.

The symposium ended with a networking session where the Hawaii attendees and CULCON members exchanged thought and ideas, as well as contact information. JASH would like to thank CULCON and its staff for supporting this symposium, and the East-West Center for co-hosting this event by providing the wonderful venue. 

A Festive Christmas Tea


On Thursday, December 12, JASH members and guests joined together for the annual Tomodachi Christmas Tea at A Cup of Tea in Kailua. It was a chance to escape the hustle and bustle of the busy holiday season and relax with some selections of holiday tea. A Cup of Tea provided a lovely backdrop with their festive Christmas décor.

Guests were entertained with guitar music by Charles K. “Uncle Charlie” Morton and everyone participated in a Christmas sing-a-long. An impromptu graceful hula by JASH intern Tomoko Hamamatsu with Uncle Charlie on guitar delighted guests. Tomodachi co-chair Kazuko Love also joined longtime member

Lillian Yajima in sharing with guests the easy-to-follow “Mele Kalikimaka Hula”. A few Tomodachi members also shared with the group some of their family traditions at Christmas. Family and togetherness were definitely noted trends.



Tomodachi members and guests enjoy an afternoon of tea at the festive A Cup of Tea in Kailua.

JASH would like to thank Tomodachi Planning Committee member Roberta Sullivan for making the arrangements for this event as well as providing the cute favors. We would also like to thank Charles K. Morton for getting us into the Christmas spirit with his medleys. Mahalo also to Tomodachi member Ray Tabata who captured the event as our volunteer photographer. Please visit www.jashawaii.org for a link to his photos. 



Hawaii and Ehime Celebrate 10th Anniversary Sister-State Relationship



Hawaii's Governor Neil Abercrombie and Ehime's Governor Tokihiro Nakamura exchange documents reaffirming sister-state/prefecture relationship on the 10th Anniversary surrounded by Hawaii and Ehime representatives. JASH President Ed Hawkins was invited to the signing ceremony.

November was the 10th Anniversary of the sister-state/prefecture relationship formally signed between the State of Hawaii and Ehime Prefecture. Following the tragic accidental sinking of the *Ehime Maru* off Honolulu, both Ehime and Hawaii promoted a number of goodwill measures to include Ehime-Hawaii Baseball exchange program, sister-school relationship between Kawanakoa Middle School and Uwajima Minami Junior High School in Ehime, and a summer internship for University of Hawaii students at Ehime's International Center. The sister-state/prefecture agreement was signed in 2003, two years following the *Ehime Maru* incident.

During the five days the Ehime delegation spent in Hawaii, Governor Tokihiro Nakamura visited local Hawaii schools engaged in cultural and educational exchanges, as well as the University of Hawaii Center for Japanese Studies that selects students for the summer internship in Ehime. JASH was invited to all of these meetings because of its role not only in maintaining the Ehime Maru Memorial at Kakaako, but also the key role it plays in continuing these cultural and educational exchanges. Many of these programs were started by JASH.

A formal reception was held at Washington Place during which JASH President Ed Hawkins, former JASH President Earl Okawa, and Ehime Maru Memorial Association Director Kenneth Saiki, along with several other community leaders were honored by Ehime Governor Nakamura with a certificate of appreciation and a Prefectural Medal. 県章



Ehime Prefectural Medal presented to JASH President and other supporters.

The Modern Honolulu hosts JASH Holiday Gala



"Surfer Joe" Teipel conducts live auction.

JASH ended 2013 on a high note with the annual holiday gala and silent auction, this year hosted by The Modern Honolulu. The staff and chefs of The Modern created a wonderful holiday ambience along with culinary delicacies, all for the enjoyment of the several hundred JASH members and guests who attended. Over 200 donated items were up for auction, and the bidding was fierce. This year a live auction for some major donated items was conducted by professional auctioneer "Surfer Joe" Teipel who donated his time. The auction raised needed funds for the Society to conduct its many programs through the year, to include educational programs for Hawaii's youth. Many of those children who benefited attended as volunteers.



JASH members and guests enjoy the food and drink offerings at The Modern while others look at auction items.

A special mahalo to the following individuals and businesses who generously supported JASH by contributing items or decorated a Christmas tree or wreath for our Silent Auction

Alan Wong's Restaurant
Alexander & Baldwin
Anonymous
Aston Hotels & Resorts
Aulani, a Disney Resort & Spa
Bead It! A Bead Gallery
Mr. & Mrs. Roger & Masako Bellinger
Big City Diner
Big Island Candies
Bishop Museum
Ms. Marilyn Cariaga
Mr. Brett Castro
Ms. Vivian Cheng
Mr. Jiun-Rong Chiou
Cookie Corner
Dave & Busters
DFS Hawaii
Diamond Head Theatre
Dollar Rent A Car
Doraku Sushi
E. A. Buck Insurance
Exhibition Technologies, Inc.
Admiral Thomas Fargo

Continued on next page



The Modern chefs create tasty offerings.

JASH would like to thank the staff of The Modern for hosting this event, and to all the volunteers and guests who made for a wonderful evening of holiday shopping, networking, and fun! 🍽️

A special mahalo to the following individuals and businesses who generously supported JASH by contributing items or decorated a Christmas tree or wreath for our Silent Auction

First Insurance Company of Hawaii	Nagaoka International Exchange Association
Flora-Dec Sales	Naguwa Family
Mr. Mark Fukunaga	Mr. David Nakanishi
Mr. Brandt Fuse	Nalo Farms
Mrs. Karen Fuse	Nanzan GiroGiro
Germaine's Luau	Neiman Marcus
Hakuyosha Clean Living	Ms. Linda Okita, Wells Fargo Home Mortgage
Halekulani Corporation	Ms. Megan Oshiro
Mr. David Hamamoto	Pacific Aviation Museum
Hawaii Opera Theatre	Pacific Guardian Life
Hawaiian Airlines	Paradise Cove Luau
Hawaiian Shochu Company	Mr. Jim Pasquino, The Boeing Company
Healing Hands	Paul Brown Salon
Ms. Kate Helbush	Pearl Country Club
Hilton Grand Vacations	Podium Raceway Hawaii
Hilton Hawaiian Village Waikiki Beach Resort	R & R Restaurants, Inc.
Hilton Osaka	Mr. & Mrs. Siegfried & Kiyoko Ramler
Hilton Tokyo	Robyn Buntin of Honolulu
Hilton Waikoloa Village	Royal Hawaiian Center
Honolulu Star-Advertiser	Roy's Restaurant
Mrs. Utako Momi Hudson	Salt + Sand
Mr. Cole Ichikawa	Dr. Gay Satsuma
Ilima Hotel	Dr. Cecile Sebastian & Dr. William Li
Imperial Hotel Tokyo	Servco Pacific Inc.
Japan Airlines	Ms. Ritsuko Seta
JTB Hawaii	Ms. Joy Soma
JW Marriott Ihilani Resort & Spa	Sony Hawaii Company
Mr. & Mrs. Howard & Audrey Karr	Tanaka of Tokyo
Ms. Kiana Kawahara	The Cherry Co., Ltd.
Ms. Dori Kim	the Compleat Kitchen- Kahala Mall
KoAloha Ukulele	The Kahala Hotel & Resort
Mr. Steve Koyama/ Koyama Realty	The New Otani Kaimana Beach Hotel
Le Bistro	the Oahu Club
LeSportsac	The Wedding Ring Shop
Ms. Korie Lum	Tokoname Restaurant
Makena Beach & Golf Resort	TRUSTA
Matson	Unicold Corporation
Maui Divers of Hawaii dba Maui Divers Jewelry	Vintage Cave
McKinley Car Wash	Yamada Family
Michel's at the Colony Surf	Mr. Wesley Yamada
Mrs. Shirley Miyamoto	Mr. Mark Yamakawa

JASH Continues to Assist Hawaii's Public Schools with STEM Education

JASH completed the first part of "Soroban in Schools" program developed specifically to help public schools and students enhance their math skills, addressing STEM (Science, Technology, Engineering, Math) education using a unique learning tool used extensively in Japanese schools. JASH received funding from the Atherton Foundation for \$5,000 for this project in 2013. With these funds, JASH contracted with a local well-known soroban (abacus) teacher in Hawaii, Mr. Hideaki Oshima of the Araki-Hiroya Soroban School. His students have won major competition prizes in Japan and have received scholarships to universities.

The school selected for this special project was Kawanakoa Middle School because of JASH's long association with them through the sister school relationship JASH helped establish with a Junior High School in Uwajima City, Ehime Prefecture (home port of the *Ehime Maru*), and the close relations with its Principal. Two classes were offered to Kawanakoa MS. The first was for students in after-school classes that included those who were struggling with math. The other was special classes for the school's math team to make them more proficient in calculations and thought process.

As to its effectiveness, Principal Ann Sugibayashi



Students focus on calculations using soroban while Oshima-sensei gives math problems.

and Vice Principal Candace Aimoto who's responsible for the after-school program said it best: "Our students are benefiting from this training in several ways. They are improving their understanding of place values, developing more confidence working with big numbers, increasing their calculation speed, and most importantly having fun with math." Comments from students are listed below:

"He [Oshima-sensei] is really fun, and although not many people use the soroban, learning how to use it is a gift.

Class always has very friendly competition, and soroban class is always really fun."

"Learning it helps your mental skills and exercises your brain. My math skills are helping me in Algebra 1."

"I enjoy when we have to calculate very fast while we use soroban. Soroban helps us start to use mental math and stop using calculator."

"Soroban class teaches me how to use my brain to solve math problems. I like when we do fast problems and I get satisfied when I get them correct."

"It taught me to be more familiar with large numbers, and it helped me to be more alert in my classes at school so I

Continued on page 9



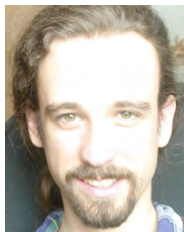
UH Student John Seymour Selected as Akihito Scholar

John Seymour, Doctoral Candidate and Lecturer, Music Theory and Composition at the University of Hawaii at Manoa Music Department, has been selected as Akihito Scholar for 2014 and 2015 academic years. Mr. Seymour was selected from several candidates after undergoing a review of application and an interview. Mr. Seymour impressed the selection committee with his background and proposed field of study, Music Composition with focus on the court music of Gagaku. He intends to study at the Sengoku Gakuen College of Music in Tokyo. The scholarship provides \$45,000 per year, which covers tuition, living expenses, and allowance for one time round trip economy class airfare between Hawaii and Japan.

The Crown Prince Akihito Scholarship Foundation provides scholarships to UH graduate students for study in

Japan and graduate students in Japan for study at UH. The Scholarship was established to commemorate the wedding of Crown Prince Akihito to Michiko Shoda in 1959 to promote good relations between U.S. and Japan. After completing their studies, the scholars are expected to serve around the world as "ambassadors of good will."

A unique aspect of the scholarship is that scholars are given an audience with Their Majesties The Emperor and Empress of Japan at their Imperial Palace residence in Tokyo. Their Majesties have maintained a special relationship with the scholars, evidenced by their visit to Hawaii in July 2009 to commemorate the 50th Anniversary of the Scholarship during which they met with the scholar alumni. The scholarship is administered by the Japan-America Society of Hawaii (JASH). Those interested in the scholarship are directed to the website at www.jashawaii.org/cpas.asp.



Nagaoka City College Students Visit Hawaii, Witness Pearl Harbor Ceremonies

Two college students from Nagaoka city, sister city of Honolulu, visited Hawaii in December. The students visited Iolani School and the University of Hawaii at Manoa to engage in a round table discussion with students to discuss how to attain peace. However, the primary purpose of their visit was to attend the Pearl Harbor Attack memorial service on December 7. JASH President Ed Hawkins accompanied the students to the Pacific Historic Park at Pearl Harbor, site of the memorial service. Following the service, Mr. Hawkins escorted the students on a walking tour of historical places on Ford Island, to include the USS Utah Memorial and the battle scars around Ford Island still remaining from the Japanese attack in 1941. Earlier, the students visited the USS Missouri museum. Following this tour, the group stopped at the Pacific Aviation Museum (PAM) for a round-table discussion with Dr. Hiroya Sugano who comes annually to Honolulu on this date to conduct the “Blackened Canteen” ceremony at the Arizona Memorial. Dr.



Nagaoka students engage in a round table discussion with University of Hawaii at Manoa students.

on the night of June 20, 1945 along with the memory of the Shizuoka citizens who died during the attack. A canteen bearing the hand print of a crewmember was discovered at the crash site by a Mr. Itoh after he had tried to assist the downed crew who ended up dying. In respect to the crew, Mr. Itoh built a monument on a hillside near the crash site and annually performed a ceremony by filling the canteen with American bourbon and pouring its contents onto the memorial in their memory. For the last 13 years, Dr. Sugano has come to Hawaii on December 7 and performed the same ceremony at the Arizona Memorial as permitted in honor of the men interred there. For the last three years, this event has been sanctioned by the National Park Service, and now Dr. Sugano performs the ceremony along with a representative of the Pacific Aviation Museum which maintains close contact with Dr. Sugano. 日本国



Dr. Hiroya Sugano pours bourbon from the Blackened Canteen onto the USS Arizona with NPS’s Daniel Martinez and PAM’s Ken DeHoff while JASH President Ed Hawkins observes.

Sugano related the story of the blackened canteen, and the students asked questions for achieving mutual understanding and peaceful relations among nations. Following the round-table, the entire group moved to the Arizona Memorial for the Blackened Canteen ceremony. Pacific Aviation Museum Director Ken DeHoff and National Park Service (NPS) Chief Historian Daniel Martinez performed the ceremony, inviting Mr. Hawkins to participate.

The Blackened Canteen ceremony rose out of a desire by certain citizens of Shizuoka city in Japan to honor the 23 crewmen of two American B-29 bombers that crashed there



Dr. Hiroya Sugano with the blackened canteen at the Arizona Memorial.

Pacific Command Invites JASH for Round Table Discussion



JASH Members inside Pacific Command Headquarters with Chief of Staff, Major General Anthony Crutchfield (center).

What is the meaning of U.S. "Rebalance" toward Asia, and how does the military respond to disaster and crises in the region? These were questions addressed head-on by top leadership of U.S. Pacific Command at a round-table discussion at U.S. Pacific Command Headquarters in Camp H.M. Smith on December 11th.

Directors of Japan-America Society of Hawaii (JASH), Trustees of Crown Prince Akihito Scholarship Foundation (CPASF), and their guests were invited to the office of the top military commander in the Asia-Pacific region to discuss these issues as well as ask any other questions. The Intelligence Directorate Deputy provided a military briefing on the geo-political situation in the region after which our members engaged in a spirited discussion on issues such as "why isn't a hospital ship based centrally in the region when there are so many natural disasters to respond to?" Host

Chief of Staff Major General Anthony Crutchfield assisted by the Deputy Plans Officer (Australian Brigadier General) and other staff members gave frank, well-reasoned responses to these questions over lunch in the conference center.

General Crutchfield thanked JASH and CPASF for the important work they do to promote the important U.S.-Japan relationship, adding that the relationship between the U.S. military and our organizations is extremely important. He ended his comments by promising to reach out more to community organizations.

JASH would like to thank U.S. Pacific Command, General Crutchfield, and the community affairs office for planning and hosting this wonderful opportunity to learn about the activities of our military forces and what their presence means to Hawaii and the Asia-Pacific region. ㊦

How the APCC has Impacted My Life

In honor of the 25th Anniversary of the Asian-Pacific Children's Convention (APCC) in Fukuoka, Japan, the Japan-America Society of Hawaii (JASH) held an essay contest asking former Junior Ambassadors to write, in 500 words or less, how the APCC and/or JASH has affected their life. Four winning essays were selected, which will be printed in Japan-America Journals in 2013. Haley Honda, a Junior Ambassador in 2009, is currently a sophomore at Pearl City High School. Her winning essay is below. JASH is proud to have served as the Liaison Office representing Hawaii



Haley Hondoy in 2009 (fourth from left).

in selecting and training our delegation to prepare them for their Fukuoka trip since 2003.

My name is Haley Honda and I went to Japan as a Junior Ambassador in 2009. It was the greatest experience for me, but I couldn't have done it without the Japan-America Society of Hawaii.(JASH) Not only have they played a huge part in my life while I was a Junior Ambassador, but

Continued on next page

Haley Honda...

Continued from previous page

I still keep in touch and find a way to stay involved. JASH has done so much for me that I cannot do enough to show my gratitude and appreciation for all of the time and hard work they put into making me the person that I am today. Even though I can't repay them for everything that they have done, I would like to tell them how much they have impacted my life and how much they improved it.

From being in JASH, I learned to be independent and to think on my own. I always thought I was, but until the Children's Convention in Fukuoka, I realized I am extremely dependent on my family. I had to think for myself, think about what is best for me, and how my actions might come across to the Japanese people.

Secondly, I learned how to be more outgoing and friendly. After going to Japan, I had an easier time meeting people and making friends. It even helped me to fit into intermediate school. I had to transfer from an elementary school in Aiea to a middle school in Pearl City where I knew basically no one. I was able to use the skills that I learned in

Japan to make friends from other schools and find clubs that were right for me.

I cannot express how much I am thankful for everything that JASH has done for me and all the things they did to guide me to the person I am today. 感謝状



Haley Honda now (left).

Soroban...

Continued from page 6

can learn and remember more.”

“It's fun doing a hands-on way for math instead of the traditional way. Soroban is helping my mental math, which is good for math team.”

Mr. Oshima also introduces the students to Japanese words and phrases, and explains Japanese cultural practices.

This is the same technique used during our Japan Day for high school students that Mr. Oshima also supports.

Next JASH intends to put these lessons on video which can be used by other schools, to include those on neighbor islands. JASH will be requesting grants and donations to support this initiative. 感謝状

Membership Updates

October- December 2013

New Corporate Member

Atlas Insurance Agency
Myland Hawaii Realty

Regular
Donor

Corporate Member Upgrade

JSDF Liaison Office
University of Hawaii Foundation

Patron
Supporting

New General Members

Ms. Ellise Akazawa
Ms. Susan Burghardt
Admiral & Mrs. Thomas Fargo
Mr. Gen Fujitani
Mr. Terumitsu Ikeda
Mr. Steve Koyama
Ms. Melissa Ann Nagamine
Mr. Keith Suzuka

Individual
Family
Sustaining
Individual
Individual
Individual
Individual
Individual

New Corporate Member

Atlas Insurance Agency

Atlas Insurance is Hawaii's largest insurance agency, serving the businesses and people of Hawaii since 1929. Our leadership position in the insurance and financial marketplace provides us access to the most competitive products and services from over 40 national and local providers. We offer a full range of insurance to protect your Business, Home and Auto, and we also offer Benefits Consulting. 感謝状

Myland Hawaii Realty Inc.

Myland Hawaii is a real estate company headquartered in Waikiki. It is a part of the OGI Holdings conglomerate based out of Tokyo with approximately 80 sister companies around the world with over 1,000 employees. Many of the member companies are in real estate related fields, however they are also in food & beverage, forestry, consulting and financial businesses. Myland Hawaii was established in Hawaii in 2008 and has been in real estate brokerage and property management business focusing on Japanese real estate investors to Hawaii through its network. 感謝状

NEIL ABERCROMBIE
GOVERNOR



KATHRYN S. MATAYOSHI
SUPERINTENDENT

STATE OF HAWAII
DEPARTMENT OF EDUCATION
PRINCE DAVID KAWANANAKO MIDDLE SCHOOL
49 FUNCHAL STREET
HONOLULU, HAWAII 96813

December 26, 2013

Japan-America Society of Hawaii
PO Box 1412
Honolulu, Hawaii 96806-1412

Dear Mr. Hawkins and Mrs. Soma Turek,

On behalf of Kawananakoa Middle School, I would like to express my appreciation to the Japan-America Society of Hawaii for enriching our math programs with your soroban initiative at our school. Since the Spring semester of 2013, your soroban initiative and generosity have enabled our middle school students to learn how to use the abacus. Our students are benefiting from this training in several ways. They are improving their understanding of place value, developing more confidence with working with "big" numbers, increasing their calculation speed, and perhaps most importantly having fun in math.

Although soroban instruction does not directly correlate with the Common Core Standards for middle level students, it provides effective math enrichment. Our teachers feel strongly that soroban helps students understand numbers and enables them to add and subtract faster. Oshima Sensei has worked with remedial students during their math workshop and with advanced students who meet afterschool to prepare for math competitions. Both groups look forward to working with the abacus and feel their math skills have improved. We would like to continue working with the soroban and Oshima Sensei. Perhaps in the future, soroban can be incorporated into our Japanese culture and language curriculum.

Once again, thank you very much for providing our school with the opportunity to work with Oshima Sensei and the abacus. We look forward to your continued support.

Sincerely,

A handwritten signature in cursive script, appearing to read "Ann Sugibayashi".

Ann Sugibayashi
Principal

A handwritten signature in cursive script, appearing to read "Candace Aimoto".

Candace Aimoto
Vice Principal/Afterschool Program Director

Calendar of Events

JANUARY

- 29 Japanese Food Trade Show, Royal Hawaiian Hotel
30 Setsubun Party, Consulate General of Japan at Honolulu

FEBRUARY

- 8 Asian-Pacific Children's Convention Interviews, JASH Office
9 Ehime Maru Memorial Ceremony, Kakaako Waterfront Park
20 How Washington, D.C. Views Japan: The Good Abe and the Bad Abe with Glen S. Fukushima, Hale Koa Hotel
22 Japan Wizards Statewide Academic Team Competition, Kapiolani Community College

MARCH

- TBD Tomodachi Hinamatsuri Celebration
28 Japan Day, Hawaii Tokai International College

APRIL

- 24 24th Annual Friendship Golf Classic, Hawaii Prince Golf Club, Ewa Beach

Mr. Daniel Dinell
Hawaii Hotel Industry Foundation
Ms. Atsuko Igarashi
International Cultural and Friendship Association
Mr. Denis Isono
Mr. Howard & Mrs. Audrey Karr
Ms. Jean Rolles
Ms. Sharon Weiner

Diplomat \$250 - \$999

E.A. Buck Insurance
Foodland Super Market
Dr. Blair Odo
The Japan Foundation Los Angeles
Dr. Beatrice Yamasaki

Colleague \$1 - \$249

Mr. David Asanuma
Mr. Roger and Mrs. Masako Bellinger
Ms. Jill Canfield
Foodland Give Aloha
Dr. Lawrence Foster
Mr. Steven Gushi
Mr. John Harada
HEI Charitable Foundation
Ms. Sharon Honda
Ms. Joelle Kawahara
Ms. Karen Knudsen
Mr. Allen Mahuka
Mr. Danny Melton
Ms. Gail Nakayama
Ms. Laura Noda
Noguchi & Associates
Ms. Hisako Obara
Ms. Cathleen Sanpei
Mr. Kenji Sumida
Ms. Barbara Tanabe
Ms. Brenda Teranishi
Mr. Michael Tokioka
Ms. Theresa Tsuda
Mr. Ronald Watanabe

Membership Updates

October- December 2013 (Continued)

General Member Upgrades

Bishop Eric Matsumoto

Family

JASH Donor Recognition

October- December 2013

Ambassador \$25,000 - \$50,000

Freeman Foundation

Statesman \$5,000 - \$24,999

Atsuhiko & Ina Goodwin Tateuchi Foundation
First Insurance Company of Hawaii Charitable Foundation
JTB Hawaii

Counselor \$1,000 - \$4,999

Anonymous
Mr. Tab Bowers



Japan-America Society of Hawaii

Promoting understanding and friendship between the peoples of Japan and the United States through the special and unique perspective of Hawaii

PO Box 1412, Honolulu HI 96806 • Tel: (808) 524-4450 • Fax: (808) 524-4451 • Email: admindir@jashawaii.org • <http://www.jashawaii.org>